



Home of the Rainbow Flock of Charollais Sheep & Deva Herd of Duroc Pigs

Church Farm Backford Chester CH2 4BE Tel. 01244 851705

Andrew: Tel: 07710 522387 Email: andrew@wtms.biz Jan: 07949 370684 Email: jan@wtms.biz

XPU * Signet Recorded * MV & EAE Accredited * NSP Member * **XPU**

THE RAINBOW CHAROLLAIS FLOCK

MUSCLING IN TO MEAT THE INDUSTRY NEEDS
Bred for performance. Bred with pride. Bred for
customers profit.

Consistently breeding high index rams with superb muscle & growth EBV's that give high returns.

High Index Rainbow Rams are being successfully used by both commercial farmers & breeders.

Premier Team 2011

The following Rainbow Shearling and Ram Lambs will be offered for sale at the Worcester Premier sale on Sat 2nd July 2011.

Rainbow rams are within the Heptavac-P+ System and were treated with a broad spectrum anthelmintic on 29th May. The ram lambs have been outside since the 27th February and with a strong belief in breeding and not feeding these ram lambs have not been pushed and will improve as they get older (just ask fellow breeders and commercial customers!) Their EBV figures are as stated in the catalogue.

XPU00246 Rainbow Kerrang

Date of Birth 22-Feb-10 Twin, Lot 25 Scrapie Genotype ARR/ARR Breed Index 293

Sire PF9048 Gawsworth Just Right Sire's Sire YAL6054 Nympton Grand Prix

Dam XPU6059

Dam's Sire XPU5028 Rainbow Fame and Fortune

Used last year on our pedigree ewe lambs with pleasing results.

Unfortunately he is related to too many of our flock to be of use, so reluctantly offered for sale.

11XPU00600 Rainbow Linkin Park

Date of Birth 03-Dec-10 Single Scrapie Genotype ARR/ARR Breed Index 246

Sire XPU0056 Rainbow Kasabian

Sire's Sire XPU7009 Rainbow House of Letterawe

Dam YUT6027

Dam's Sire QT5087



Rainbow Linkin Park 11XPU00600

11XPU00600 – Rainbow Linkin Park – Lot Number 137

A well balanced ram and Jan's pick to start our run with good EBV's – Dam bred Rainbow Komodo Dragon sold at last year's Premier sale to the Foulrice Flock.

Scan Weight at 145 days – 56.4Kg
Eye Muscle depth 31.5mm
Gigot Score 66.4

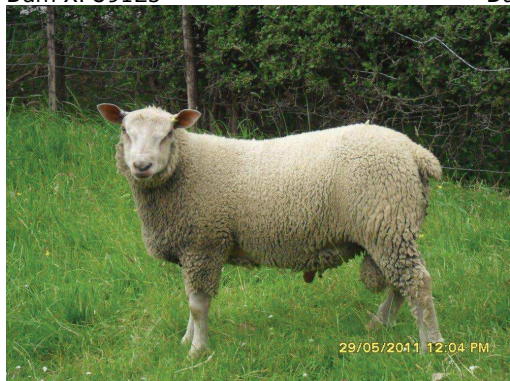
11XPU00619 Rainbow Lithium

Date of Birth 03-Dec-10 Triplet Scrapie Genotype ARR/ARR Breed Index 342 Top 25%

Sire PF9048 Gawsworth Just Right Sire's Sire YAL6054 Nympton Grand Prix

Dam XPU9125

Dam's Sire DG6432 Foulrice Garcia



Rainbow Lithium 11XPU00619

11XPU00619 – Rainbow Lithium – Lot Number 138

A really hardy type with tremendous head cover bred from our best shearling ewe. This ram is pleasing on the eye and will grow into a big powerful shearling.

Scan Weight at 145 days – 60Kg
Eye Muscle depth 31.1mm
Gigot Score 62.9

11XPU00652 Rainbow Last Shadow Puppet

Date of Birth 04-Dec-10 Triplet Scrapie Genotype ARR/ARR Breed Index 309 Top 25%

Sire PF9048 Gawsworth Just Right

Sire's Sire YAL6054 Nympton Grand Prix

Dam YUT7082

Dam's Sire YUT5025 Eyelid Flamboyant



Rainbow Last Shadow Puppet

11XPU00652 Rainbow Last Shadow Puppet – Lot Number 139

Weighing heavier than he looks, he has always lived in the shadow of his sister who is our show lamb this year.

Scan Weight at 144 days – 57Kg
Eye Muscle depth 32.3mm

11XPU00699 Rainbow Leviathan

Date of Birth 05-Dec-10 Single Scrapie Genotype ARR/ARR Breed Index 232

Sire PF9048 Gawsworth Just Right Sire's Sire YAL6054 Nympton Grand Prix

Dam ZFY4146 Dam's Sire DG2520 Foulrice Chieftain



Rainbow Leviathan

**11XPU00699 Rainbow Leviathan –
Lot Number 140**

Andrew's pick of the 2011 crop, with length, power and style. A tremendous handling lamb who will be shown untrimmed.

Scan Weight at 143 days – 60Kg
Eye Muscle depth 32.5mm
Gigot Score 69.4

11XPU00721 Rainbow Led Zeppelin

Date of Birth 05-Dec-10 Single Scrapie Genotype ARR/ARR Breed Index 2301

Sire XPU0056 Rainbow Kasabian
Dam DG1085

Sire's Sire XPU7009 Rainbow House of Letterawe
Dam's Sire DG9400 Foulrice Javelin



Rainbow Led Zeppelin

**11XPU00721 Rainbow Led Zeppelin –
Lot Number 141**

This lamb is bred from the best maternal line within our flock. This lamb was her 10th crop she also bred Rainbow Gawain who is one of our most consistent rams and was sold to the Nant-y-Rhiw flock. A smart, white headed lamb with a tremendous skin.

Scan Weight at 143 days – 57Kg
Eye Muscle depth 29.5mm
Gigot Score 67.0